



New stronger FlowCon EVS-insert

FlowCon introduces a next-generation-version of the FlowCon EVS-insert.

Naturally, the new EVS-insert will fit in the same valve bodies as the previous one, i.e. A15/20, AB15/20 and ABV1 (DN15/20/25) and apply with the same range of actuators (EV.0.2-EV.0.5).

The new stronger EVS-insert is launched to avoid the risk of breaking the flexible grips due to rough handling and avoid possible risk of leakage through the slots in the flexible grips.

Procedure of installing the stainless steel cartridge in the new EVS-insert remains unchanged and is as follows: Take the cartridge o-ring (Photo1) and place it on the internal edge (Photo2). Afterwards push the 3/4" stainless steel cartridge (bottom first) into the EVS-insert (Photo3) until the grips are holding the cartridge properly.

If the cartridge needs to be exchanged, it is necessary to slightly cut the sides of the grips with a box knife and re-move the cartridge by pulling the two now

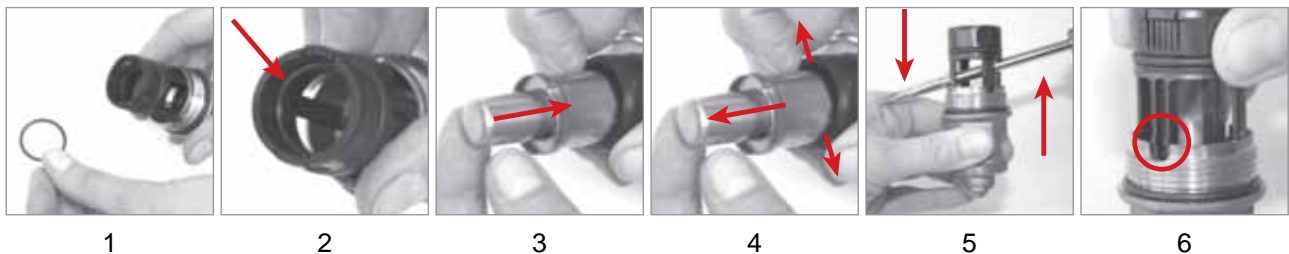
flexible grips outwards on each side of the EVS-insert with one hand and pulling the stainless steel cartridge from the EVS-insert with the other (Photo4). The o-ring will come out as well.

Before installing the replacement cartridge, the black composite part also needs to be replaced. Simply remove the composite part using a small piece of steel of brass bar or similar tool (ø10mm and 150mm length). Place the ancillary tool through the composite part (Photo5) and push down until the part loosens a little; no need to use much force. Then do the exact same thing from the opposite side of the part and the composite part is now free and can be easily removed from the EVS-insert by hand.

The new composite part is placed into the EVS-insert (Photo6). Please be aware of the two marks on each side of the composite part; these must fit into the two grooves on the EVS-insert. When in place, push the two parts together until they click and the EVS-insert is ready for use.

Same replacement procedure is used when renovating first-generation composite EVS-inserts. Procedure is very easy and can be done on site if necessary.

For further information please see the FlowCon EVS tech-note and installation instruction.



DENMARK

DUBAI

SINGAPORE

USA

www.flowcon.com